



THE APPLICATION AT THE SERVICE OF MANAGEMENT AND HARBOUR NAVIGATION



Patrick Boulen/HAROPA

PORTALL

PortAll® is a dynamic web application intended for harbour workers. The tool is organized by features dedicated to each harbour service (hydrographers, harbour managers, mariners, dockers...), and allows all these services to exchange the necessary information (Real-time data, most up-to-date harbour info...) in **an efficient way**.

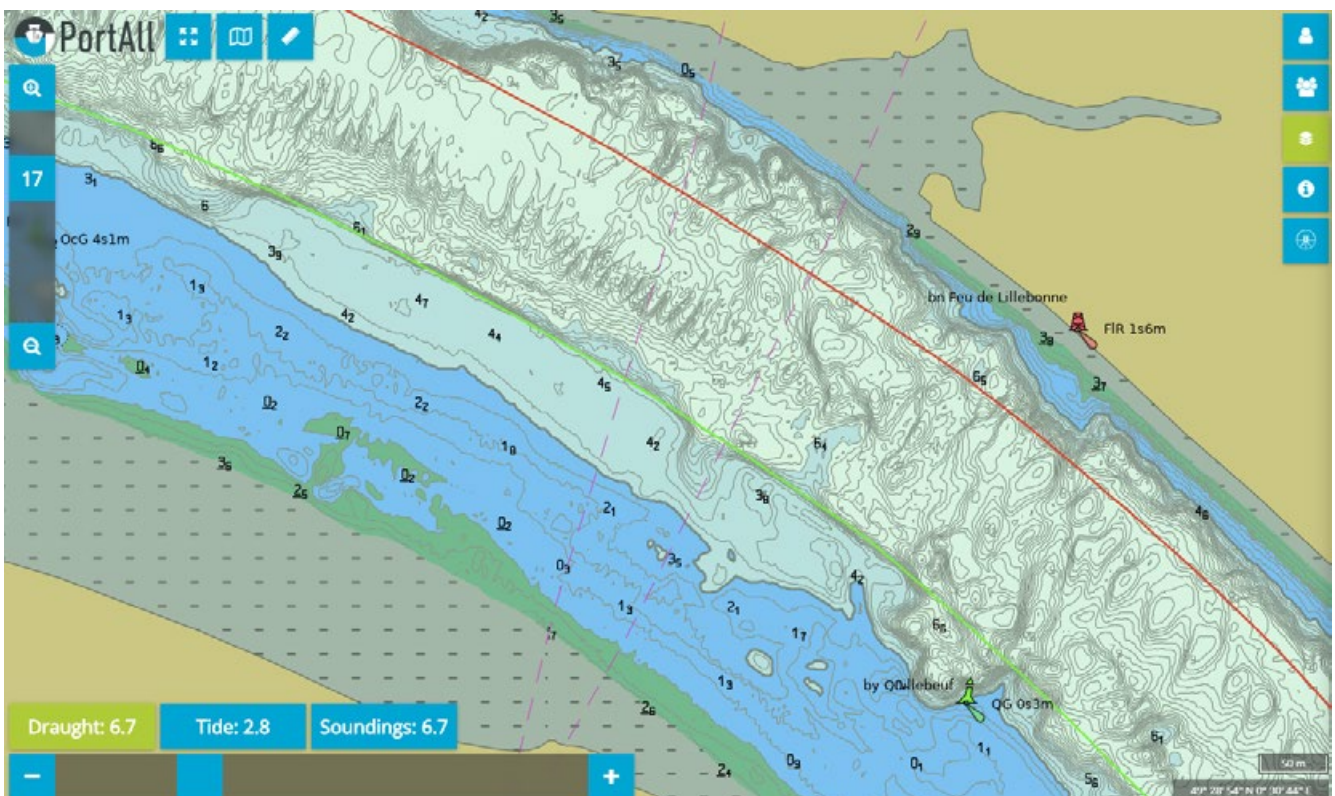


PortAll can be used on different supports including smartphones, laptops, and tablets with the following services:

- Centralising and sharing of the data
- Automated bathymetry compliant with S-57 IHO standard
- A user-friendly and responsive tool
- Modular architecture adaptable to different harbour activities
- Controlled access
- Real time data: AIS, Currents...
- Safety contour info: Bathymetry and water-levels

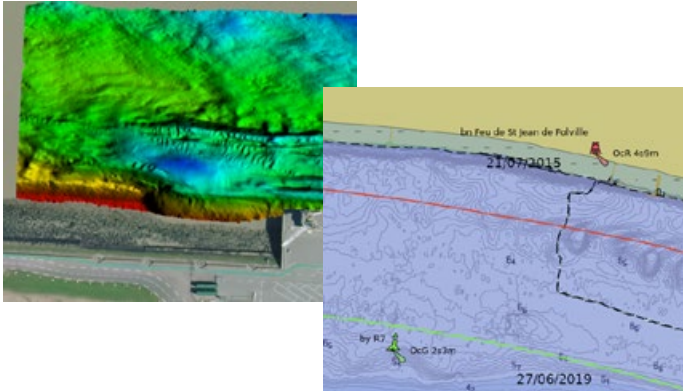
NAVIGATION SAFETY AT THE CENTER OF PORTALL

One of the lead compounds of **PortAll** is the **ULHYSESSE®** module allowing to produce a S-57 bathymetry layer in an automated way. Each user can choose their own security contour in order to visualize the appropriate navigation route (Safe Water/Unsafe Water). PortAll's interoperability allows this route planning to adapt to the tides and to display the resulting changes in on the app.



FOR HYDROGRAPHERS

The **ULHYSESSE** module allows the hydrographers to generate and update the bathymetry layers automatically as soon as a new sounding dataset is available. This bathymetry layer is generated as a bathymetry ENC. Once the hydrographer approves the output, all **PortAll** users can visualize the safest and most up-to-date navigation route based on this information. Mariners may also download bENCs through their own PPU (Portable Pilot Unit). The spatial arrangement of the bathymetry data also allows a complete freedom for data acquisition and exploitation, additionally, **ULHYSESSE** uses the most precise harbour ENC's in order to connect the bathymetry to the docks as accurately as possible.



FOR HARBOUR MASTERS



PortAll allows the harbour masters to manage ship placement based on location templates of vessels. Each location template is customizable in order to suit best the specificities of the vessel. Every information which makes the placement easier can be added on it. **PortAll** also enables the harbour master to visualize real time data such as AIS info, weather data or motions of the cranes. Any information shared with other harbour services can also be visualized. Additionally, the software allows the captain to transmit any info they judge necessary to the next watchkeeper. The normalized S-52 display is available on the app for an optimal use.

FOR MARINERS

Every information that the harbour pilots judge necessary for the mission planning can be provided by the tool. Mariners can, for example, receive notifications when a vessel is in approach or leaving its berth. Since the tool is usable on tablet or smartphone, every pilot can board with the most up-to-date and precise data available (berthing ENC's, bathymetry, messages, obstructions...) as well as real-time information (AIS, water levels...). **PortAll** also allows communication with the ship's captain, whom can then plan the most appropriate route based on the info received from the different sources. This info can be general or specifically based on the vessels. The replay module provided with the tool allows pilots to oversee the past manoeuvres for training or improvement.



**For Harbour ENC's, Geomod uses their software PortSide for generation of S-57 harbour and berthing ENC. Geomod proposes ENC production and edition based on the client's needs.*

PortAll, ULHYSESSE, PortSide are developed by Geomod. Geomod is a software company specialized in marine geomatics products in alignment with the IHO standards. Our main clients are NAVAL GROUP, IFREMER, GENAVIR, THALES, SHOM, harbours (Le Havre, Rouen, Nantes Saint-Nazaire), Harbour mariners unions (Marseille-Fos, Dunkerque, Sète).

GEOMOD BREST

305, rue Jurien de la Gravière
29 200 BREST
+33 (0)2 98 05 55 91
portall@geomod.fr

WWW.GEOMOD.FR



@Geomod

